

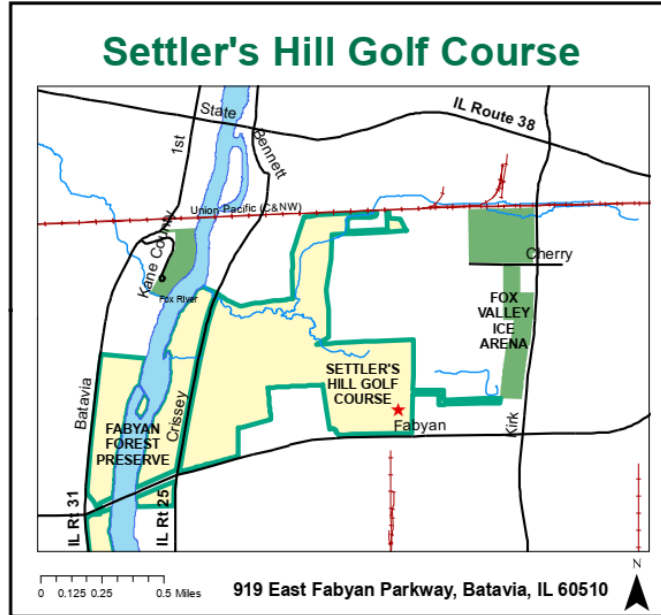
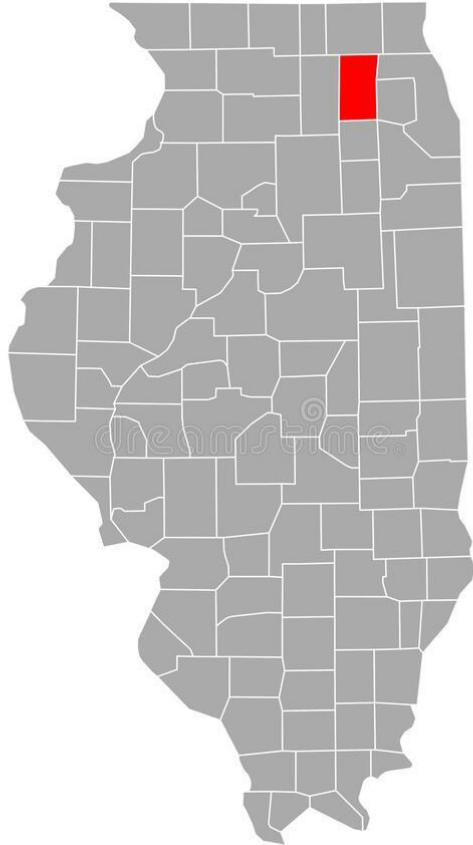
3 Life Lessons from a Major Golf Course Renovation on an Existing Landfill

Illinois Association of Floodplain and Stormwater Management Annual Conference 2023

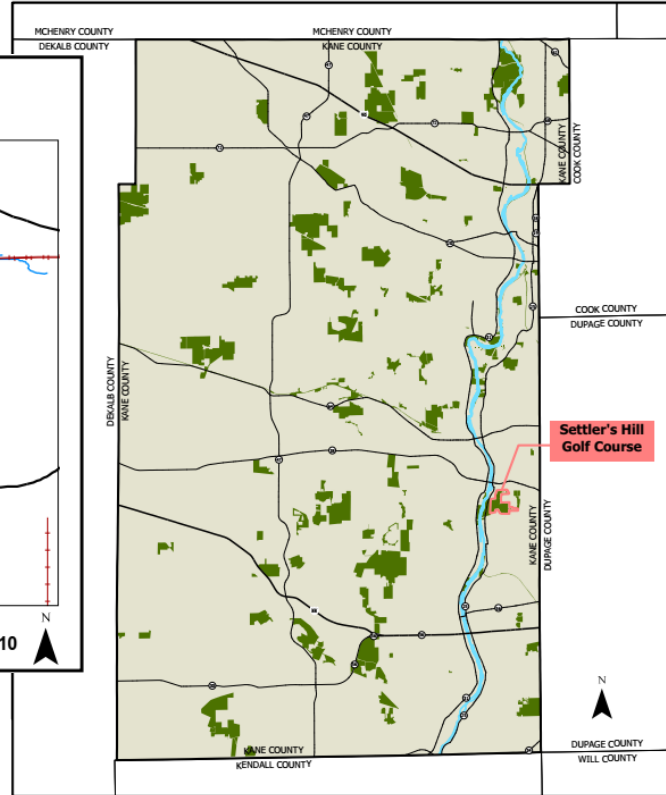
March 15, 2023



Location



Settler's Hill Golf Course
County Locator Map



Master Plan



SETTLER'S HILL MASTER PLAN



Ownership

Settler's Hill Golf Course
Aerial Map (July 2021)



Settler's Hill Golf Course & Fabyan FP (Batavia, IL)
Project Location Map



3/10/2021

N



History



1939



- Started as 9 Hole Golf Course
- Additional 9 Holes Built
- 27 Holes of golf proposed
- No disturbance to the surface of landfill allowed
- One-of-a-kind golf course
- Waste Management Signature Golf Course
- 2006 Settler's Hill Landfill Closed
- Methane gas used to power some of City of Geneva residents



- Forest Preserve District of Kane County
- County of Kane
- Waste Management, Inc. of Illinois
- Martin Design Golf
- Weaver Consultants Group
- Wadsworth Golf Construction Company
- ESM Civil Solutions, LLC.
- Engineering Resource Associates



- Aged Golf Course
- Midway Landfill
- Settler's Hill Landfill
- Methane Gas
- Power Plant
- Infiltration
- Leachate Collection & Treatment
- Golf Course Built on Landfill

COURSE SLOPES
Blue 131
White 127
Gold 122
Red 120



Settler's Hill
919 E. FAYAN PARKWAY
BATAVIA, ILLINOIS 60510
630-232-1636



COURSE RATING
Blue 72.2
White 70.4
Gold 68.3
Red 69.7

HOLE NUMBER	1	2	3	4	5	6	7	8	9	OUT	HOLE	10	11	12	13	14	15	16	17	18	IN	TOT	HCP	NET
BLUE COURSE	337	365	471	141	355	488	205	389	540	3291	BLUE	407	562	452	162	340	359	165	560	332	3339	6630		
WHITE COURSE	317	353	404	123	335	479	156	382	526	3075	WHITE	399	523	424	142	309	349	160	525	317	3148	6223		
GOLD COURSE	299	343	383	116	304	470	134	375	473	2897	GOLD	375	465	392	122	289	307	149	481	302	2882	5779		
PAR	4	4	4	3	4	5	3	4	5	36	PAR	4	5	4	3	4	4	3	5	4	36	72		
HANDICAP	15	11	1	17	7	5	13	9	3		HDCP	6	4	2	16	18	14	12	8	10				
PAR	4	4	4	3	4	5	3	4	5	36	PAR	4	5	4	3	4	4	3	5	4	36	72		
RED COURSE	283	296	317	107	263	404	108	250	415	2443	RED	340	388	357	92	263	281	112	407	262	2502	4945		

Scorer:

Attest:

Date:



Settler's Hill Golf Course

Mission:
Improve Settler's Hill Golf Course to be more economically viable, environmentally sustainable, operationally efficient and recreationally purposeful.

- Goals:**
- Improve the economic viability of the golf course**
 - Expand the target market
 - Improve playability and enjoyment
 - Improve and update the infrastructure
 - Create a more user-friendly (pre-golf and post-golf) product
 - Improve or expand interior and exterior views of the property
 - Improve banquet and food service opportunities

- Improve landscape function and expand natural habitat**
 - Locate areas to expand natural habitat
 - Devise sustainable maintenance practices
 - Better integrate natural areas and natural resources into the golf experience
 - Generate educational opportunities

- Improve the recreational opportunities at Settler's Hill G.C.**
 - Attract a wider target market
 - Introduce a junior course
 - Introduce a full golfer practice range
 - Expand clubhouse use opportunities
 - Expand educational opportunities on the golf course and in the clubhouse areas

- New Features**
- Practice Range & Practice Green
 - Junior Course
 - Redesign for holes 6, 15 and 16

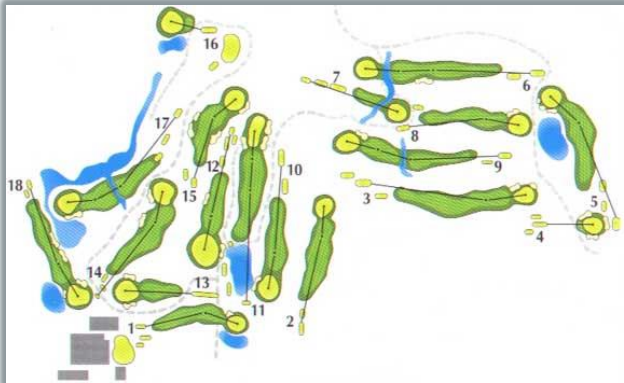


Course view looking northwest

- Improve Surface Drainage
- Expand Subsurface Drainage
- Advanced Irrigation System
- New Irrigation Pump Station & Water Supply
- Minimize Restricted Play
- Enlarge Natural Areas
- Replace Paths
- Replace Bridges
- Returning 9's



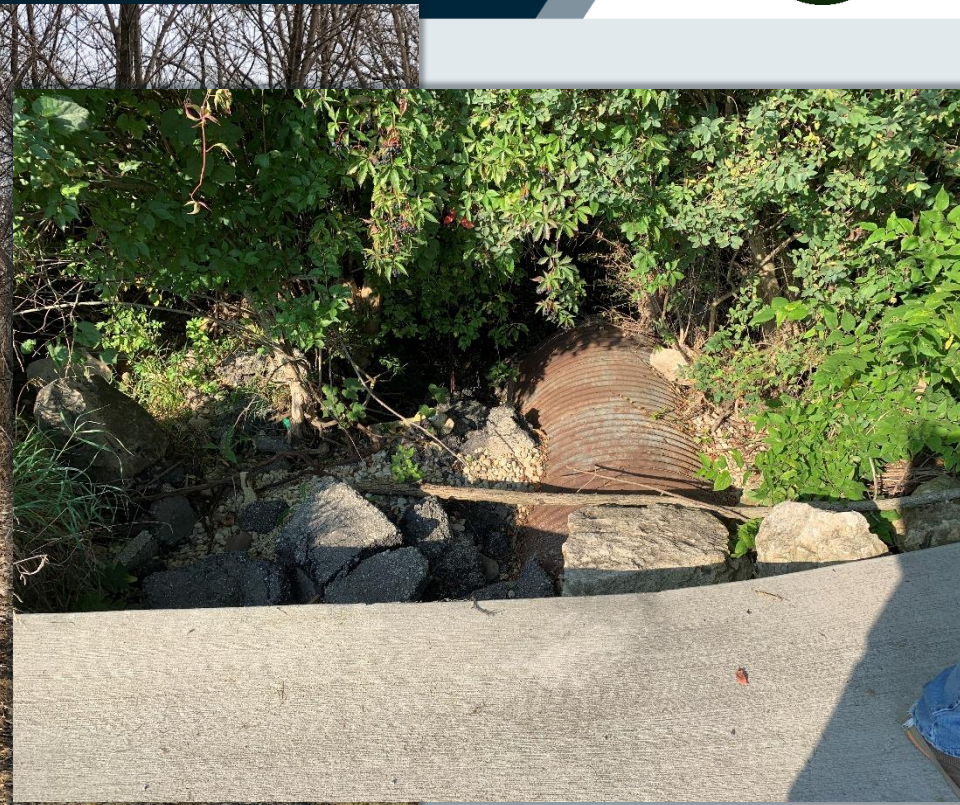
Know the History,
Know the Site,
Know the Goals!



Demolition



Damaged Infrastructure



Bad Days



Big Friend



Tees



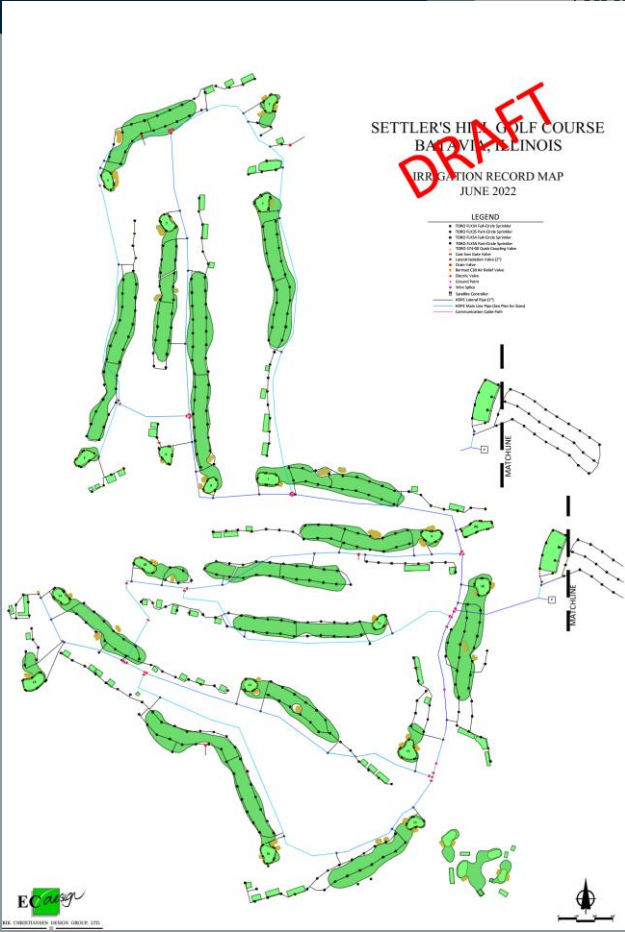
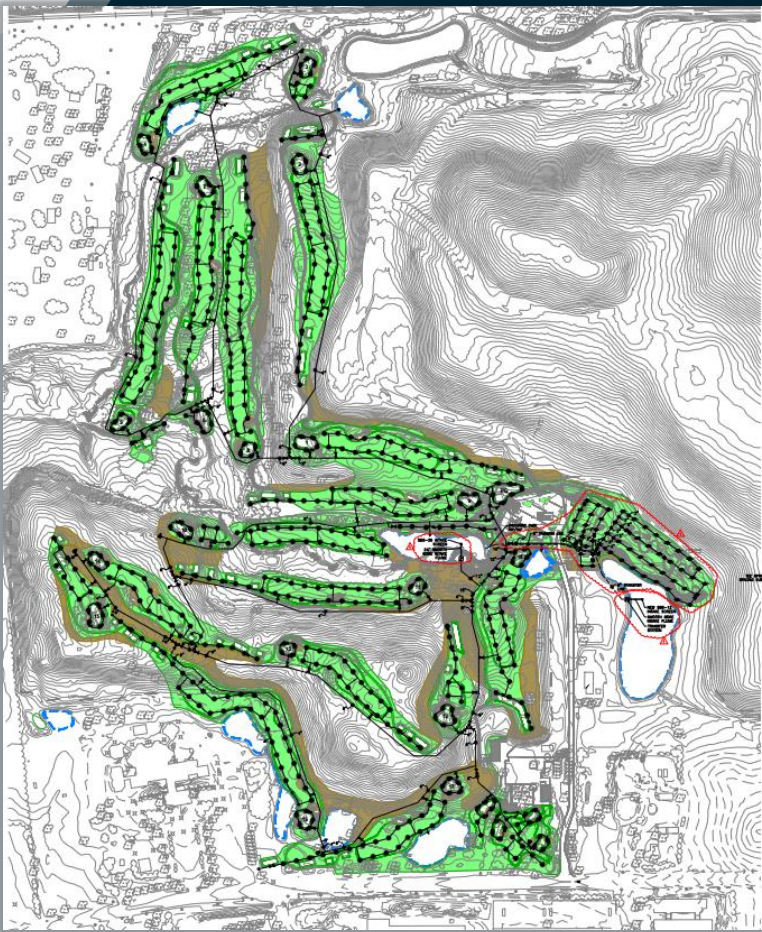
Fairways



Greens



Irrigation



Irrigation

Settler's
Hill
Golf Course



Water Supply Drama



Water Supply



Soil Erosion & Sediment Control



Bridge Replacement



Paths



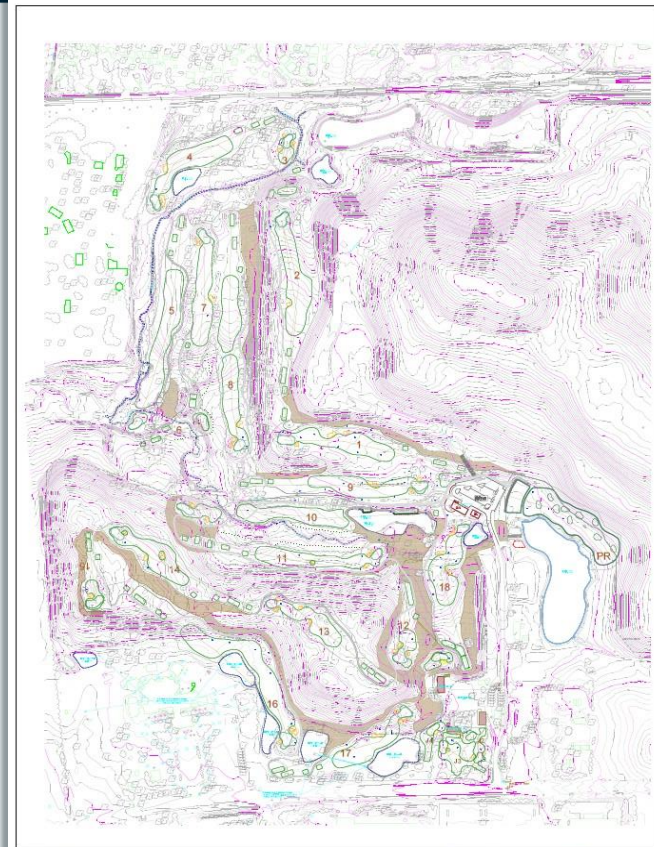
Youth Golf



Driving Range



Environmental Upgrades



Mass Grading



Final Seeding



Final Seeding



Grow In





Grow In



Hole 1



Grow In







No Construction Observation,
No Quality Control!

Existing Clubhouse



Future Clubhouse



Southwest View



Northwest View



North View



Too Little,
Too Much!

See Big Picture,
See Success!

The End



“Plans fail for lack of counsel
but with many advisers they
succeed.”

Proverbs 15:22

Kenneth N. Anderson, Jr.
Engineering Resource Associates
Office: 630-393-3060
Mobile: 630-803-9220
kanderson@eraconsultants.com