



Illinois Association for Floodplain and Stormwater Management

IAFSM is a professional organization promoting floodplain and stormwater management. Our website is Illinoisfloods.org

Regulation

Communities are required to adopt ordinances to regulate the floodplains in order for citizens of their community to be eligible for insurance from the National Flood Insurance Program.

For more information, see <http://dnr.state.il.us/owr/nfip.htm>

Mapping

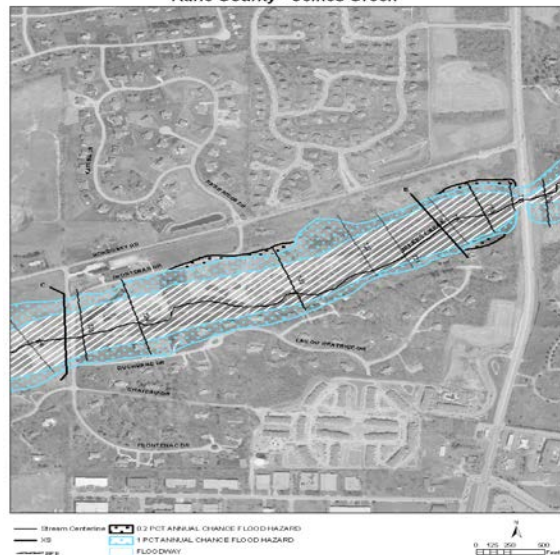
Flood Insurance Rate Maps have become digital and easier to access and interpret in recent years. These websites are good resources to determine if a home is in a floodplain.

Find them at Msc.FEMA.gov and Illinoisfloodmaps.org

Original FIRM (Flood Insurance Rate Map)
Kane County - Jelkes Creek



DFIRM (Digital Flood Insurance Rate Map)
Kane County - Jelkes Creek



Insurance

Any licensed insurance agent can sell flood insurance.

For more information, see floodsmart.org

Letter of map amendment (LOMA)

This is the process to remove a structure from the floodplain based upon elevation.

More information can be found at fema.gov by searching for LOMA or the LOMA form, MT-EZ.